



TeraRouting Tester Software Module OSPF

Product Overview

The OSPF routing protocol software module works together with all the basic TeraRouting Tester (TRT) features such as the Flap Scheduler, Traffic Generator, and integrated results. A topology editor provides a visual tool for simulating complex networks quickly. Comprehensive IPv6 support is also available with the OSPFv3 software.

LSA Support

- Router LSA – Type 1
- Network LSA – Type 2
- Summary LSA – Type 3
- ASBR Summary LSA – Type 4
- External – Type 5
- NSSA – Type 7
- Area-local opaque LSA-Type 10

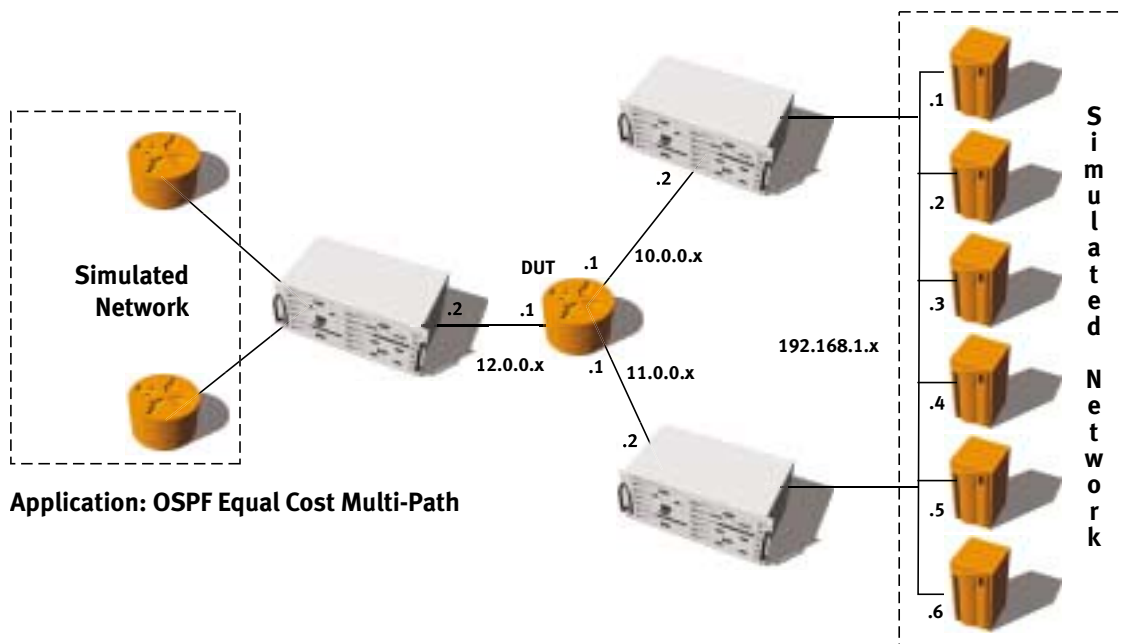
OSPF Adjacency Features

- 100 OSPF adjacencies per port
- VLAN IDs and priority per adjacency
- ATM VCCs per adjacency
- Emulated adjacencies can be DR, BDR, or None
- IP Address
- Area ID and Router ID
- Cost, MTU, and Hello Interval

- Router Priority and Options
- Router Dead Interval/Retransmit Interval
- LSA Refresh Time/Flood Delay

OSPF LSA Generator

- Quickly configure logical OSPF tree-like topologies on every adjacency
- Area Types: Regular, Stub, Stub No Summary, NSSA, NSSA No Summary
- Number of Router LSAs per Area
- Maximum number of Point-to-Point and Broadcast interfaces
- Maximum number of Transit Networks and routers per Transit Network
- Number of Stub Networks and distribution of addresses
- Number of Summary Networks and distribution of addresses and % of duplicate
- Number of External Networks and distribution addresses and % of duplicate
- Can select generated IP address range
- Can specify Age, Sequence Number, and Checksum (good/bad)
- All options for each LSA block will have useable defaults



Application: OSPF Equal Cost Multi-Path

TeraRouting Tester OSPF applications

Spirent Communications
 26750 Agoura Road
 Calabasas, CA
 91302 USA
 E-mail: productinfo@spirentcom.com

Sales Contacts:
North America
 +1 800-927-2660
Europe, Middle East, Africa
 +33-1-6137-2250
Asia Pacific
 +852-2511-3822
All Other Regions
 +1 818-676-2683

www.spirentcom.com



Analyze | Assure | Accelerate™

Router LSA (Type 1) Options

- Supports up to 1000 router LSAs per adjacency
- Supports up to 100 links per router LSA
- Can copy/paste and duplicate one or more LSAs/links
- Router ID and Router Options
- Router Type: Virtual Link, Area Border Router, AS Boundary Router
- Supports the following link types: Transit Network, Point-to-Point, Stub Network, Virtual Link

Network LSA (Type 2) Options

- Supports up to 1000 network LSAs per adjacency
- Supports up to 100 links per network LSA
- Can copy/paste and duplicate one or more LSAs/links
- Router ID; each router ID attached to the network
- DR IP address of the network
- Netmask of the network

Summary LSA (Type 3) Options

- Supports millions of Summary LSAs
- Can copy/paste and duplicate one or more LSAs
- Router ID and Prefix Length
- Number of LSAs, Start IP Address, and Increment value for LSA range
- Metric for LSA Range

ASBR-Summary LSA (Type 4) Options

- Can copy/paste and duplicate one or more LSAs
- Advertising Router ID and ASBR Router ID
- Metric

External/NSSA LSA (Type 5/7) Options

- Supports millions of external/NSSA LSAs
- Can copy/paste and duplicate one or more LSAs
- Router ID and Prefix Length
- Number of LSAs, Start IP Address, and Increment value for LSA range
- Metric and Metric Type for LSA range
- Forwarding Address and Route Tag

Area-local Opaque LSA (Type 10) Options

- Router ID and Router Options
- TLV Type: Router or Link
- Opaque ID

OSPF Flap Events

- Break/Restore Physical Link
- Stop/Resume Hellos (all or individual ports/routers)
- Age Summary LSAs (all or individual areas)
- Age ASBR-Summary LSAs (all or individual areas)
- Age External LSAs (all or individual areas)
- Age/Remove Router LSAs
- Age/Remove Network LSAs
- Re-advertise LSAs (all or individual areas)

OSPF Real Time and Final Results

- Port/Router
- Received/Sent Hellos
- Received/Sent Database Descriptors
- Received/Sent Router LSAs
- Received/Sent Network LSAs
- Received/Sent Summary LSAs
- Received/Sent ASBR-Summary LSAs
- Received/Sent External LSAs
- Received/Sent NSSA LSAs

- Received/Sent Requests
- Received/Sent Acks

Related RFCs

- RFC 1587 – Describes the OSPF NSSA option
- RFC 2328 – Describes OSPF Version 2
- RFC 2329 – OSPF Standardization Report
- RFC 2740 – OSPF Version 3 (for IPv6)

Requirements

- TeraRouting Tester software (SWF-1230A or SWF-1239A)
- A SmartBits 600, 6000B, or 6000C chassis with the appropriate hardware modules.
- An IBM or compatible Pentium™ PC running Windows® 2000/NT/XP, with mouse and color monitor.

Supported Modules

Module	Description
ATM-3451A	ATM OC-3c (STM-1c), 2-port, multi-mode, 1300nm, TeraMetrics
ATM-3451As	ATM OC-3c (STM-1c), 2-port, single mode, 1310nm, TeraMetrics
ATM-3453A	ATM OC-3c/OC-12c (STM-1c/STM-4c), 2-port, multi-mode, 1300nm, TeraMetrics
ATM-3453As	ATM OC-3c/OC-12c (STM-1c/STM-4c), 2-port, single mode, 1310nm, TeraMetrics
LAN-3301A	10/100/1000Base-T Ethernet, Copper, 2-port, TeraMetrics
LAN-3302A	10/100Base-T Ethernet, Copper, 2-port, TeraMetrics
LAN-3306A	10/100Base-T Ethernet, Copper, 4-port, TeraMetrics XD
LAN-3311A	1000Base Ethernet, GBIC, 2-port, TeraMetrics
LAN-3321A	10/100/1000 Mbps and Gigabit Ethernet Fiber, 2-port, TeraMetrics XD
LAN-3325A	10/100/1000 Mbps and Gigabit Ethernet Fiber, 4-port, TeraMetrics XD
LAN-3327A	10/100/1000 Mbps and Gigabit Ethernet Fiber, 1-port, TeraMetrics XD
POS-3505As	POS OC-48c (STM-16c), 1-port, single mode, 1310nm, TeraMetrics
POS-3505AR	POS OC-48c (STM-16c), 1-port, single mode, 1550nm, TeraMetrics
POS-3511A	POS OC-3c/OC-12c (STM-1c/STM-4c), 2-port, multi-mode, 1300nm, TeraMetrics
POS-3511As	POS OC-3c/OC-12c (STM-1c/STM-4c), 2-port, single mode, 1310nm, TeraMetrics
POS-3519As	POS OC-192c (STM-64c), 1-port, 2-slot, single mode, 1310nm, TeraMetrics
POS-3519AR	POS OC-192c (STM-64c), 1-port, 2-slot, single mode, 1550nm, TeraMetrics
XLW-3721A	10GBase Ethernet Optical, XENPAK, 1-port, 2-slot, TeraMetrics

**Spirent
Communications**
26750 Agoura Road
Calabasas, CA
91302 USA
E-mail: productinfo
@spirentcom.com

Sales Contacts:
North America
+1 800-927-2660
**Europe, Middle East,
Africa**
+33-1-6137-2250
Asia Pacific
+852-2511-3822
All Other Regions
+1 818-676-2683

www.spirentcom.com



Ordering Information

SWF-1230A

TeraRouting Tester with RIP software module

SWF-1231A

OSPF software module for TRT

SWF-1232A

IS-IS software module for TRT

SWF-1233A

MPLS software module for TRT

SWF-1234A

BGP software module for TRT

SWF-1235A

IPv6 software module for TRT

SWF-1239A

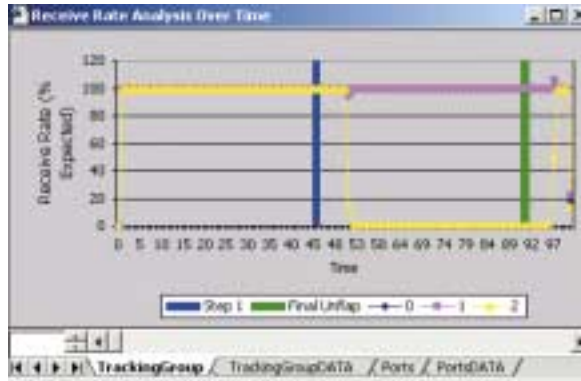
All available software modules for TRT

SWF-1255A

SmartBits Automation

SUS-SMB

12-month Software Update Support Service



Protocol	Port	Entity	Direction	State	Event Type	Time (sec)	Parameters
OSPF	fa0/0	192.168.200.3	Tx	DR/Other	Hello	25.99	RIID = 192.168.200.3, AID = 0.0.0.0, DR = 0.0.0.0, E
OSPF	fa0/0	192.168.200.3	Rx	DR/Other	DD	26.993	RIID = 4.4.4.4, AID = 0.0.0.0, Headers = 0
OSPF	fa0/0	192.168.200.3	Tx	DR/Other	DD	31.017	RIID = 192.168.200.3, AID = 0.0.0.0, Headers = 70
OSPF	fa0/0	192.168.200.3	Rx	DR/Other	Update	31.033	RIID = 4.4.4.4, AID = 0.0.0.0, LSAs = 32

TeraRouting Tester OSPF test result screens

Spirent Communications
 26750 Agoura Road
 Calabasas, CA
 91302 USA
 E-mail: productinfo@spirentcom.com

Sales Contacts:
North America
 +1 800-927-2660
Europe, Middle East, Africa
 +33-1-6137-2250
Asia Pacific
 +852-2511-3822
All Other Regions
 +1 818-676-2683

www.spirentcom.com

