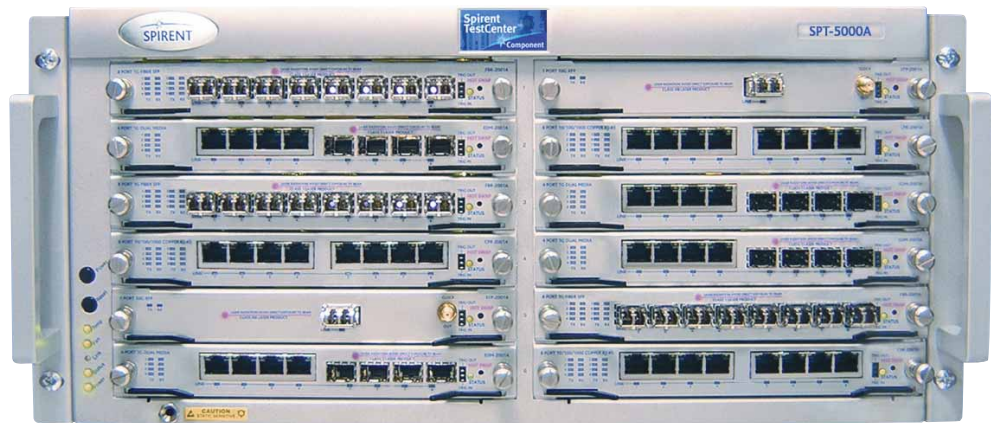




Spirent TestCenter

SPT-2000A Chassis and SPT-5000A Chassis



Product Overview

Spirent TestCenter contains multiple hardware and software components. There are two chassis, each of which can be populated with a variety of test modules. Both chassis are compatible with all of the Spirent TestCenter product line components; they both permit “hot swap” on all test modules for easy service or replacement while the chassis is fully operational; and both can be easily remotely managed through an IP network.

The SPT-2000A chassis is designed for easy transportation, with a removable carrying handle and a loaded weight of 25 pounds. The rack-mountable SPT-2000A holds up to two modules that can support up to sixteen 10/100/1000 Mbps Ethernet ports, sixteen Gigabit Ethernet ports, 2 10GbE ports, or a mixture of these port types.

The SPT-5000A is a high-density chassis that is suitable for the lab or production test environment. The SPT-5000A has 12 slots, which support up to 96 10/100/1000 Mbps Ethernet ports, 12 10GbE ports, or a mixture of these port types.

Applications

Using the SPT-2000A portable chassis, equipment manufacturers can test devices in the lab and then carry TestCenter modules along to a customer site to prove their devices’ performance capabilities. Service providers and enterprises selecting network equipment can test and benchmark performance for different devices from various manufacturers.

Spirent TestCenter customers can perform comparative analysis of network equipment to determine the suitability of a specific application prior to its deployment. The SPT-5000A chassis can be deployed where high-density, low cost Ethernet ports are required for high volume production testing.

Benefits

- *Ease of service*—Both chassis support hot swap on all test modules for easy service or replacement while the chassis is fully operational
- *Flexible operations*—Multi-user operation provides maximum efficiency in hardware resource use
- *Reduce time on system upgrades*—High speed chassis backplane provides parallel downloads for system updates
- *Reduce cost*—Use the same hardware platform to perform research and development, comprehensive functional testing and high scale performance testing
- *Centralize administration*—The Spirent TestCenter Administration Application provides a single tool to manage your entire investment in Spirent TestCenter components

GET IT DONE FASTER WITH

Spirent TestCenter

- Hot swappable modules
- High-speed backplane for parallel downloads
- Multiple users per test module for greater efficiency of resources

Spirent Communications
26750 Agoura Road
Calabasas, CA
91302 USA
E-mail: productinfo@spirentcom.com

Sales Contacts:
North America
+1 800-927-2660
Europe,
Middle East, Africa
+33-1-6137-2250
Asia Pacific
+852-2511-3822
All Other Regions
+1 818-676-2683

www.spirentcom.com



Analyze | Assure | Accelerate™



Key Features

- Comprehensive temperature monitoring with visual indicators and complete thermal status of the test system through the Administration Application
- Supports hot swap of all test modules
- Supports multi-user operation
- Synchronize up to 255 chassis for high density test beds
- Automatically calibrate synchronization between chassis
- Works with the Spirent TestCenter software application for comprehensive functional testing and performance analysis all in one system
- Supports sophisticated automated industry standard performance tests defined in RFC 2889 and RFC 2544.
- Provides GPS (Global Positioning System), and CDMA (Code Division Multiple Access) TIA/EIA-95B, external timing reference support
- Supports 10/100/1000 Mbps (half/full duplex in 10/100 mode) Ethernet connections to a host PC. Can be set for auto-negotiation or speed is completely configurable
- 19" rack-mountable
- Both chassis are shipped with the Spirent TestCenter OS as well as the Spirent TestCenter Administration Application, which provides a rich set of tools to manage your entire investment in Spirent TestCenter components—hardware, firmware and software
 - Discover all of the Spirent TestCenter chassis on your network and group them into useful profiles. The profiles allow you to connect to all of the chassis within a group and to perform key tasks on them simultaneously
 - Refer to a single interface for the rich set of information available about each Spirent TestCenter chassis, test module and port group: serial number, IP addresses, hardware model, media type, firmware version, log files, real-time status of key resources, and more

- Manage your Spirent TestCenter firmware
Simultaneously download new firmware to multiple chassis and test module
- Examine your entire installed base of Spirent TestCenter software licenses, the chassis to which each license applies, and other important license information. The tool can be used to simultaneously download license keys to multiple chassis and to append newly purchased licenses to existing ones
- Real-time status monitoring of all equipment in the profile

Technical Specifications

SPT-2000A Technical Specifications

- Spirent TestCenter 2U, 2-slot portable chassis
- Supports up to 16 10/100/1000 Mbps Ethernet ports, 16 Gigabit Ethernet ports, 8 dual media Gigabit Ethernet ports, 2 10GbE ports or a combination of these port types
- Portable design with an easy to remove handle for optional rack mounting
- Built-in module locking security mechanism to prevent unwanted removal of modules
- Input power: 100-120/220-240 VAC. Nominal 115 or 230 VAC, 50-60 Hz., 12A MAX
- Dimensions: 15"W x 3.5"H x 21"D (38.1W x 9H x 53.3D cm)
- Weight: 25 lbs. (11.3 kg) fully loaded. Shipping weight approx. 28 lbs. (12.7 kg)
- Operating environment: 59° to 104° F (15° to 35° C); 20 to 80% relative humidity. Must have space for unimpeded airflow into the chassis fans
- Front panel LEDs: power, fan, link, status, and over temperature
- Back panel LEDs: activity/collision, link/error, 10/100Mbps, and 1000Mbps
- Ethernet connection: 10 Base-T connector 10/100/1000 Mbps (half/full duplex in 10/100 mode)



- Connectors: DB9 serial console; RJ-45 expansion in/out connectors for multiple chassis connection; RJ-45 BITS clock connector; connectors to attach to an external GPS or CDMA receiver

SPT-5000A Technical Specifications

- Spirent TestCenter 5U chassis with 12 test module capacity
- Supports up to 96 10/100/1000 Mbps Ethernet ports, 96 Gigabit Ethernet ports, 48 dual media Gigabit Ethernet ports, or 12 10GbE ports or a combination of these port types
- Optional module locking security mechanism to prevent unwanted removal of modules
- Input power: 100-240 VAC. Nominal 115 or 230 VAC, 50-60 Hz
- Dimensions: 19"W x 8.5"H x 19.75"D (48.3W x 21.6H x 50.165D cm)
- Weight: 54 lbs. (24.4 kg) fully loaded. Shipping weight approx. 58 lbs. (26.3 kg)
- Operating environment: 59° to 104°F (15° to 40°C); 20 to 80% relative humidity. Must have space for unimpeded airflow into the chassis fans, and out of the chassis vents. Must also have blank panels installed for all empty slots
- Front panel LEDs: power, fan, link, status, and over temperature
- Back panel LEDs: activity/collision, link/error, 10/100Mbps, and 1000Mbps
- Ethernet connection: 10 Base-T connector 10/100/1000 Mbps (half/full duplex in 10/100 mode)
- Connectors: DB9 serial console; RJ-45 Expansion In/Out connectors for multiple chassis connection; RJ-45 BITS clock connector; connectors to attach to an external GPS, or CDMA receiver

Supported Modules

Module	Description
CPR-1001A	10/100/1000 copper RJ-45, 8 port
EDM-1001A	10/100/1000 dual media, 4 port
FBR-1001A	1G fiber SFP, 8 port
XFP-1001A	10G XFP, 1 Port
CPR-2001A	10/100/1000 copper RJ-45, 8 port
EDM-2001A	10/100/1000 dual media, 4 port
FBR-2001A	1G fiber SFP, 8 port
CPR-2002A	10/100 copper RJ-45, 8 port
XFP-2001A	10G XFP, 1 port

Requirements

- Pentium™ or greater PC running Windows® 2000 SP4 or XP SP1/1A/2 with mouse/color monitor required for GUI operation
- Pentium™ or greater PC running Windows® 2000 SP4 or XP SP1/1A/2, Red Hat Enterprise Workstation Linux 3.0 or SUN Solaris 7.0/8.0 required for automated operation
- One Ethernet cable and one 10/100/1000 Ethernet card installed in the PC

Ordering Information

SPT-2000A	Spirent 2U Chassis and Controller
SPT-5000A	Spirent 5U Chassis and Controller
ACC-5000A	LockBar for Spirent 5U chassis
ACC-2006A	19" Rackmount for SPT-2000A

Spirent Global Services

Spirent Global Services provides a variety of professional services, support services, and education services — all focused on helping customers meet their complex testing and service assurance requirements. For more information, visit the Global Services website at www.spirentcom.com/gs or contact your Spirent sales representative.

Spirent Communications
26750 Agoura Road
Calabasas, CA
91302 USA
E-mail: productinfo@spirentcom.com

Sales Contacts:
North America
+1 800-927-2660
Europe,
Middle East, Africa
+33-1-6137-2250
Asia Pacific
+852-2511-3822
All Other Regions
+1 818-676-2683

www.spirentcom.com