

# Packet Blazer Ethernet Test Module

FTB-8510

---

Fully integrated functionality for SLA verification of Ethernet-based packet services

---

Measures throughput, burstability, latency and frame loss

---

Dual test ports for lab benchmarking of Ethernet devices

---

Remote control via the LAN connection under test for end-to-end performance testing

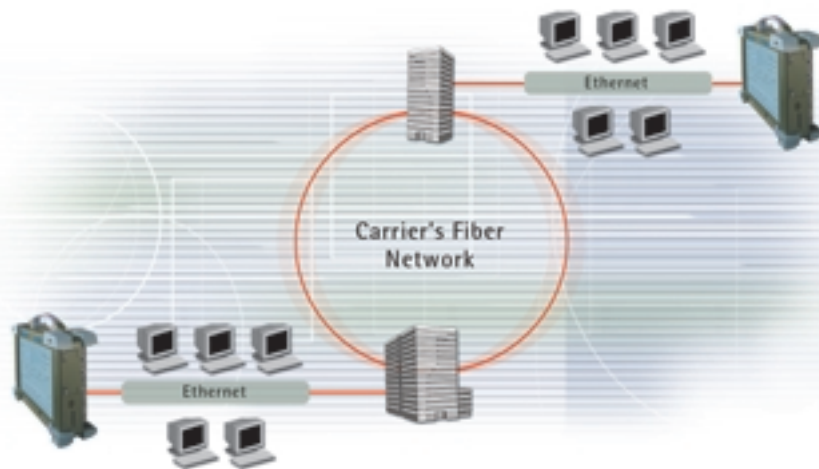
---



# EXFO's Packet Blazer—SLA Assurance

As a module/option to the FTB-400 Universal Test System, STG™ Series portable test gear and Network Guardian™ G2 remote testing agent, the FTB-8510 Packet Blazer™ Ethernet Test Module brings service-level agreement (SLA) verification to Ethernet-based packet services. EXFO's FTB-8510 tests transparent connectivity in its native format: 10/100/1000Base-T, 1000Base-SX, 1000Base-LX and 1000Base-ZX for LAN-to-LAN services delivered via:

- ATM
- Frame relay
- Packet over SONET/SDH (PoS)
- SONET/SDH hybrid multiplexers
- Inverse multiplexers
- Switched Ethernet
- VLANs
- Dark fiber
- DWDM or other means.



## Key Features

- › Dual TestSet feature enables end-to-end performance testing (as specified by leading standards bodies) by controlling a remote Packet Blazer via the LAN connection under test
- › Dual test ports for lab benchmarking of Ethernet devices
- › Measures throughput, burstability, latency and frame loss
- › Simultaneous traffic generation and capture at 100 % wire speed for 10, 100 or 1000Base-T, 1000Base-SX, 1000Base-LX and 1000Base-ZX full-duplex networks at all packet sizes
- › Transparent LAN service (TLS) testing with wire-speed, full-duplex 10 Mb/s, 100 Mb/s or 1000 Mb/s traffic-generation capabilities
- › Easy-to-use Smart User Interface (SUI) for configuration screens, customization of test suites, reporting on real-time and historical performance
- › EtherBERT™ (patent-pending) for bit-error-rate testing of 10 Mb/s, 100 Mb/s and 1000 Mb/s Ethernet circuits
- › IEEE 802.1q framing capability to test RFC2544 in a layer 2 VLAN environment

## Efficiency and Reliability

With the Packet Blazer, you can test both telecom and packet services as well as conduct end-to-end performance testing with a single test set. The FTB-8510 ensures long-term integrity and error-free data delivery across Ethernet WAN links.

## User-Friendly Interface

The easy-to-use Smart User Interface (SUI) lets you tailor screen configurations, customize test routines and format reports on real-time and historical performance.

## First-Class Comprehensiveness

The FTB-8510 performs transparent LAN service (TLS) testing with wire-speed, full-duplex 10, 100 or 1000 Mb/s traffic-generation capabilities. It delivers simultaneous traffic generation and capture at 100 % wire speed for 10/100/1000Base-T, 1000Base-SX, 1000Base-LX or 1000Base-ZX full-duplex networks at all packet sizes. It also features EtherBERT™ for bit-error-rate testing of 10/100/1000 Mb/s Ethernet circuits.

## Packet Blazer Smart User Interface



## General Specifications<sup>1</sup>

	FTB-8510 <sup>2</sup>	FTB-8510-1 <sup>2</sup>	FTB-8510-2
Ports	Two 10/100Base-T ports	Two 10/100Base-T ports and one Gigabit Ethernet port	Two 10/100Base-T ports and two Gigabit Ethernet ports
Type of connectors	RJ-45 (ISO 8877)	RJ-45 (ISO 8877) and LC	RJ-45 (ISO 8877) and LC
Connect speed	10/100 Mb/s	10/100/1000 Mb/s	10/100/1000 Mb/s
Duplex mode	Full/half duplex auto-negotiation	Full/half duplex auto-negotiation	Full/half duplex auto-negotiation
Maximum port capacity	200 Mb/s (bidirectional)	2000 Mb/s (bidirectional)	2000 Mb/s (bidirectional)
Ethernet testing	RFC2544 RFC1242	RFC2544 RFC1242	RFC2544 RFC1242
Weight	0.5 kg (without transceivers)	(1.1 lb) (without transceivers)	
Size (W x H x D)	9.6 cm x 2.5 cm x 26 cm	(3 3/4 in x 1 in x 10 1/4 in)	
Operating temperature	0 °C to 40 °C	(32 °F to 104 °F)	
Storing temperature	-40 °C to 60 °C	(-40 °F to 140 °F)	

### NOTE

1. Similar specifications apply to Packet Blazer modules option for STG Series and Network Guardian G2

2. Upgrade kit also available for FTB-8510, enable one or two Gigabit Ethernet ports on FTB-8510 Packet Blazer

# Ordering Information

## Ordering Module

FTB-85XX

Model  
 FTB-8510  
 FTB-8510-1  
 FTB-8510-2

For Gigabit Ethernet optical interfaces, customer need to order FTB-859x Transceivers separately.

## Ordering Test Kit

TK-400-8500-XX-XXX-XX-FTB-85XX-XX-XX-XX

Screen code

D3 = STN passive screen  
 D4 = TFT active screen

Memory

N10 = 256 MB  
 N12 = 512 MB

Expansion unit

00 = 2-slot module receptacle  
 H = 7-slot module receptacle

Transceiver 1550 nm options (1000Base-ZX)  
 8592-1 = 1 transceiver module  
 8592-2 = 2 transceiver modules

Transceiver 1310 nm options (1000Base-LX)  
 8591-1 = 1 transceiver module  
 8591-2 = 2 transceiver modules

Transceiver 850 nm options (1000Base-SX)  
 8590-1 = 1 transceiver module  
 8590-2 = 2 transceiver modules

Model

FTB-8510  
 FTB-8510-1  
 FTB-8510-2

## Ordering Model

FTB-859x Transceivers

FTB-8590 1000Base-SX (850 nm) LC connectors optical SFP transceiver module for Packet Blazer FTB-8510

FTB-8591 1000Base-LX (1310 nm) LC connectors optical SFP transceiver module for Packet Blazer FTB-8510

FTB-8592 1000Base-ZX (1550 nm) LC connectors optical SFP transceiver module for Packet Blazer FTB-8510

## Laser Safety

21 CFR 1040.10  
 IEC 60825-1

Class 1 Laser Product  
 Class 1 Laser Product

Find out more about EXFO's extensive line of high-performance portable instruments by visiting our Web site at [www.exfo.com](http://www.exfo.com)

### Rugged Handheld Solutions

- OLTS
- Power Meter
- Light Source
- Talk Set

### UNIVERSAL TEST SYSTEM

- OTDR
- OLTS
- ORL
- Switch

### Optical Fiber

- OSA
- PMD
- Chromatic Dispersion Analyzer
- Multiwavelength Meter

### DWDM Test Systems

- 10/100 and Gigabit Ethernet
- SONET/SDH (DS0 to OC-192c)
- SDH/PDH (64Kb/s to STM-64c)

### Protocol

CORPORATE HEADQUARTERS	465 Godin Avenue	Vanier (Quebec) G1M 3G7 CANADA	Tel.: 1 418 683-0211 . Fax: 1 418 683-2170
EXFO AMERICA	1201 Richardson Drive, Suite 260	Richardson TX 75080 USA	Tel.: 1 800 663-3936 . Fax: 1 972 907-2297
EXFO EUROPE	Le Dynasteur, 10/12 rue Andras Beck	92366 Meudon la Forêt Cedex FRANCE	Tel.: +33.1.40.83.85.85 . Fax: +33.1.40.83.04.42
EXFO ASIA-PACIFIC	151 Chin Swee Road, #03-29 Manhattan House	SINGAPORE 169876	Tel.: +65 6333 8241 . Fax: +65 6333 8242
EXFO CHINA	Beijing New Century Hotel Office Tower, Room 1754-1755 No. 6 Southern Capital Gym Road	Beijing 100044 P. R. China	Tel.: +86 (10) 6849 2738 . Fax: +86 (10) 6849 2662
TOLL-FREE (USA and Canada)	Tel.: 1 800 663-3936	<a href="http://www.exfo.com">www.exfo.com</a> • <a href="mailto:info@exfo.com">info@exfo.com</a>	

EXFO has made every effort to ensure that the information contained in this specification sheet is accurate. However, we accept no responsibility for any errors or omissions, and we reserve the right to modify design, characteristics and products at any time without obligation. Units of measurement in this document conform to SI standards and practices.

Contact EXFO for prices and availability or to obtain the phone number of your local EXFO distributor. For the most recent version of this spec sheet, please go to the EXFO Web site at <http://www.exfo.com/support/techdocs.asp>. In case of discrepancy, the Web version takes precedence over any printed literature. All names, trademarks, products and services mentioned are registered or unregistered trademarks of their respective owners.

