

BlackBerry your network's sweetest fruit?



BlackBerry is today's leading wireless connectivity solution for a large number of mobile professionals like enterprise and governmental organizations worldwide.

It allows users to stay connected with secure and wireless access to E-mail, corporate data, calendar and web, to easily manage all their communication and information from a single BlackBerry device whenever and wherever required.

BlackBerry eliminates the hassles of dial-up by moving mobile data to a "push" architecture.

Especially for mobile professionals a maximum of quality and reliability is most essential.

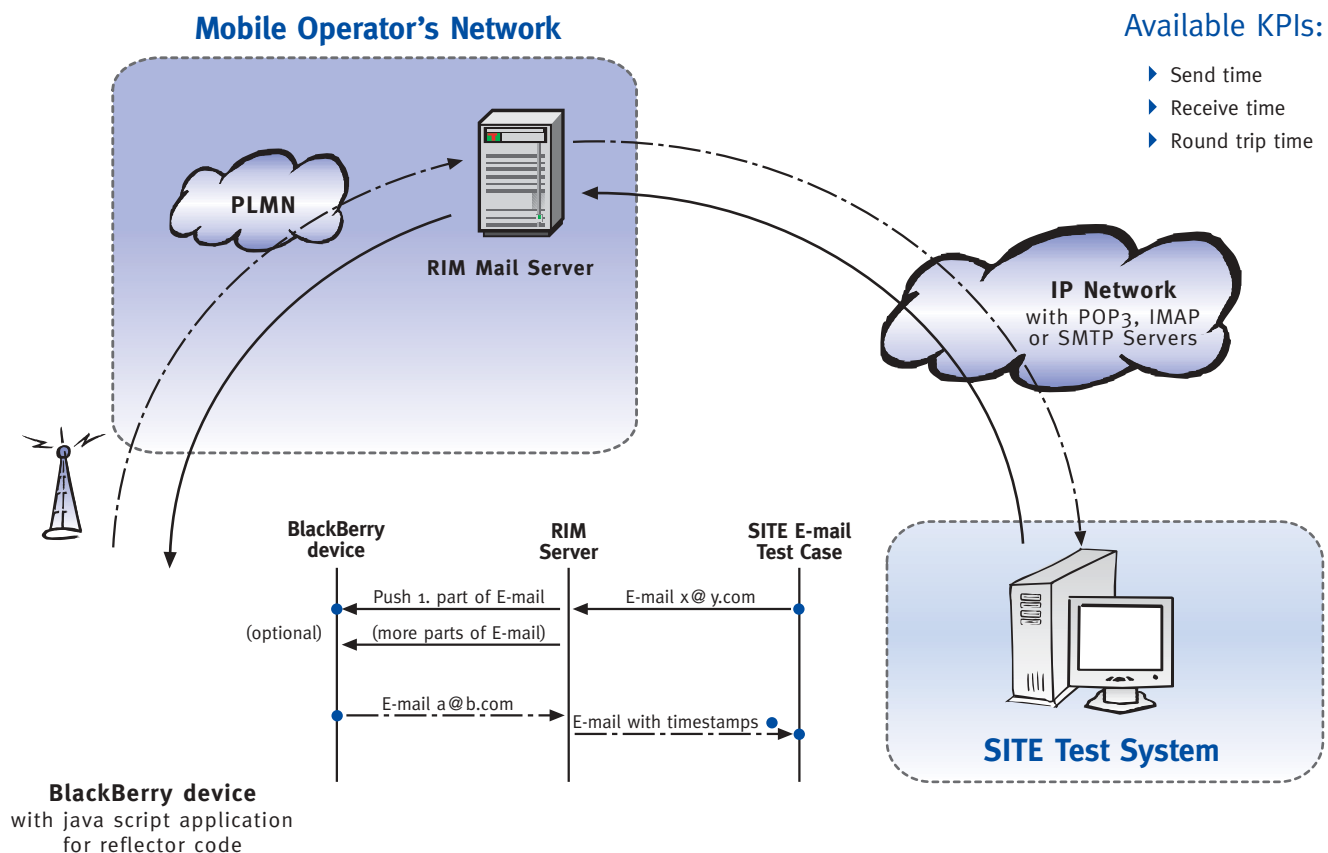
SIGOS offers you a fully automated BlackBerry Test System!

Features

- ▶ Simulation of real subscriber behaviour
- ▶ Over the air testing and ethernet testing
- ▶ Interfaces: GSM/GPRS U_m
- ▶ Real End2End testing of BlackBerry 'push' service
- ▶ Using commercial BlackBerry device
- ▶ Check sending and receiving E-mails wirelessly
- ▶ Check the BlackBerry device integrated email features
- ▶ Using BlackBerry devices with a java script application for reflector code – for sending emails
- ▶ Management notification and reporting

QoS testing solution for BlackBerry:

- ▶ Sending a message from SITE test system to a BlackBerry device via mobile operator's network
- ▶ Important: time synchronisation for time KPIs
- ▶ BlackBerry device receives E-mails of the SITE test system per "push" from the RIM Server and it immediately responds to the sender with a receive timestamp
- ▶ SITE extracts e.g. timestamp details from the E-mail and processes them to measurements which can give delivery delay or success rates in both directions



Your benefits

- ▶ Automated testing: avoid time and money consuming manual tests
- ▶ Increase reliability of the GSM and UMTS networks → ARPU
- ▶ Increase customer satisfaction
- ▶ SQM: monitoring and measuring of service availability and quality → Ensuring SLAs with precise KPIs
- ▶ Scalable architecture: from stand alone to widely distributed systems
- ▶ Central SIM Multiplexing → No "SIM card traveling"
- ▶ Quick detection of problems due to parallel testing at any time