

What about mobile Internet browsing?



A very powerful extension for network test systems is the availability of a web browsing function.

This extension is fully integrated in SITE.

SITE tests are able to simulate the behaviour of a real web user in front of an internet browser in combination with mobile subscribers.

This application can be used with either GSM or WLAN connectivity.



SIGOS offers you a fully automated Web Browsing, IP Test System!

Features

- ▶ Simulation of real subscriber behaviour
- ▶ Simulation of different browsers, e.g. Netscape, MSIE
- ▶ Central SIM Multiplexer: infinite number of SIM cards can be managed
- ▶ Interfaces: GSM/GPRS U_m, UMTS U_u, WLAN, Ethernet
- ▶ Chains of user interaction on a web application, e.g. a full ecommerce session
- ▶ HTTP post/get request methods
- ▶ HTTPS (SSL) for secure transactions
- ▶ Cookie handling
- ▶ Follow links both by name or URL



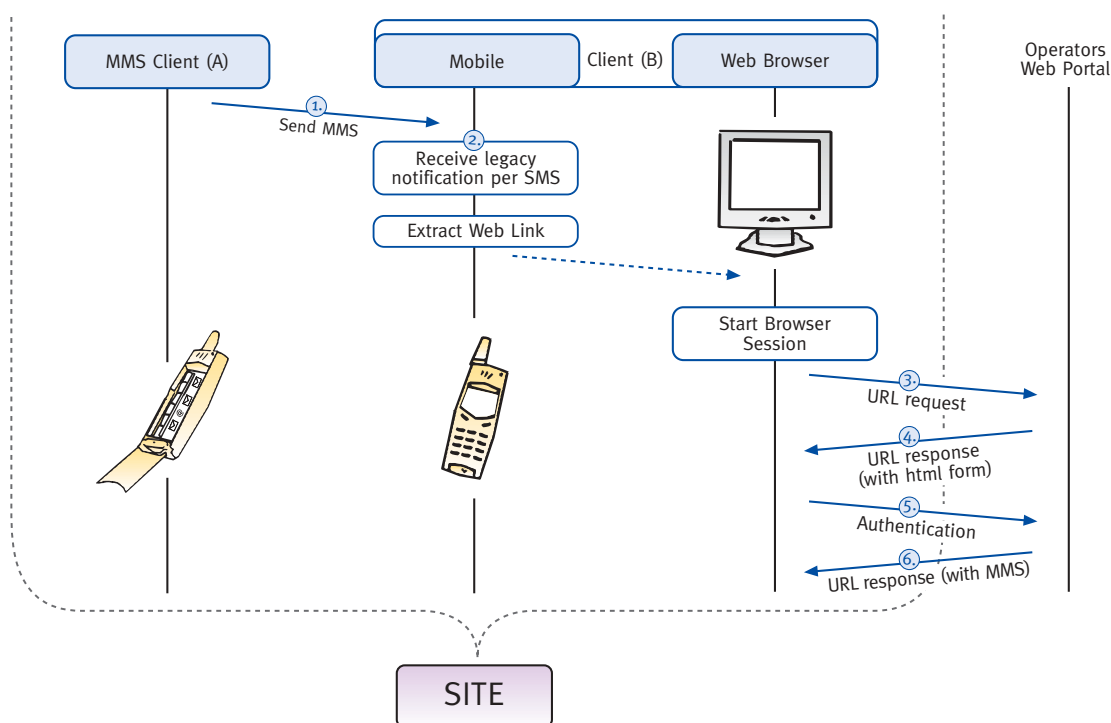
Testing Services

such as:

- ▶ Send and Check E-Mail
- ▶ Send MMS and SMS over a Web Portal
- ▶ Check Cookies
- ▶ Limited check of HTML page content (keywords, images)
- ▶ HTML parsing

Example: Send MMS to a non MMS compatible mobile

1. Client (A) sends MMS to Mobile (B).
2. (B) receives an SMS notification with a Web Link possibly with password.
3. (B) starts a Web session by sending this Web Link (URL) to an operator Web Portal.
4. Web Portal responds and asks (B) for his authentication.
5. (B) sends authentication (e.g. mobile no., possibly with password).
6. Web Portal responds with MMS.



Your benefits

- ▶ Automated testing: avoid time and money consuming manual tests
- ▶ Increase reliability of the GSM and UMTS networks → ARPU
- ▶ Increase customer satisfaction
- ▶ SQM: monitoring and measuring of service availability and quality → Ensuring SLAs with precise KPIs
- ▶ Scalable architecture: from stand alone to widely distributed systems
- ▶ Central SIM Multiplexing → No "SIM card traveling"
- ▶ Quick detection of problems due to parallel testing at any time